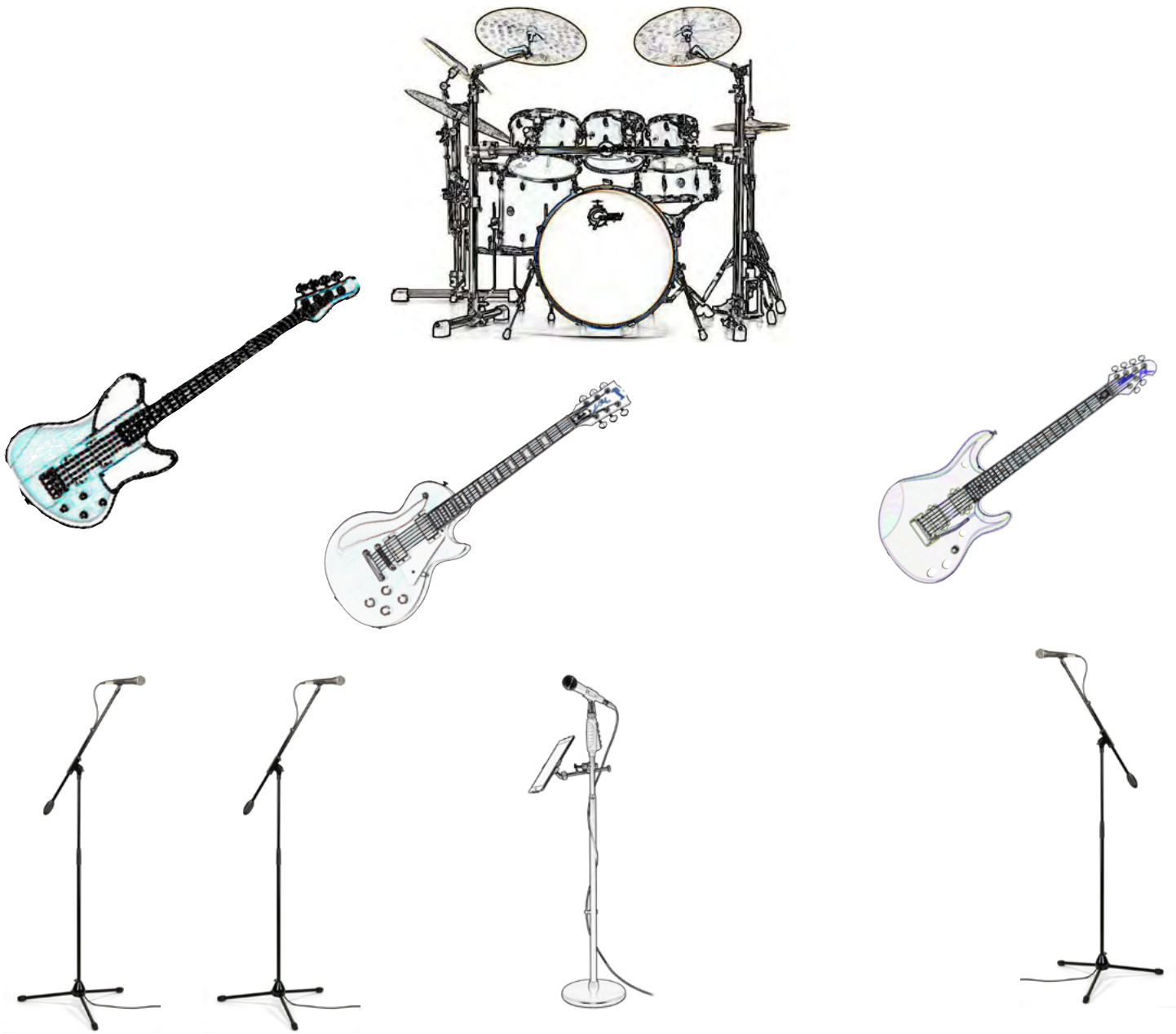




Faith Head Technical Rider



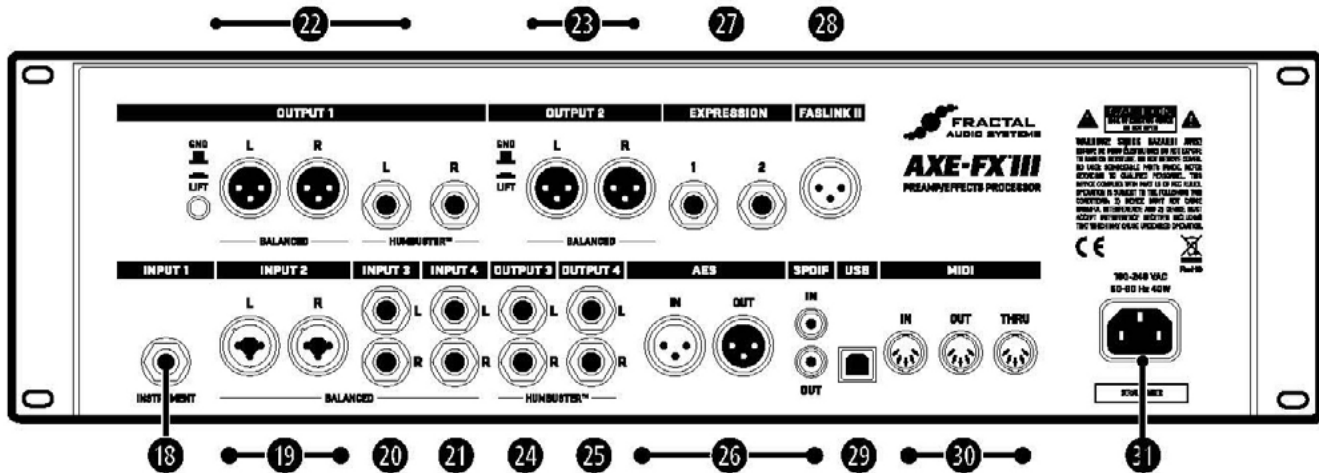
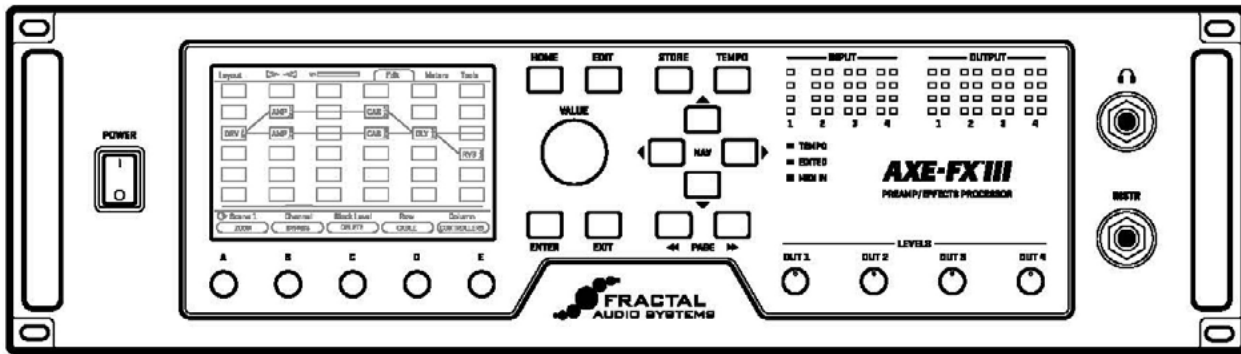
Faith Head Live Setup:

The guitar signals comes from a Fractal Audio Axe-FX II inputs from an XLR.

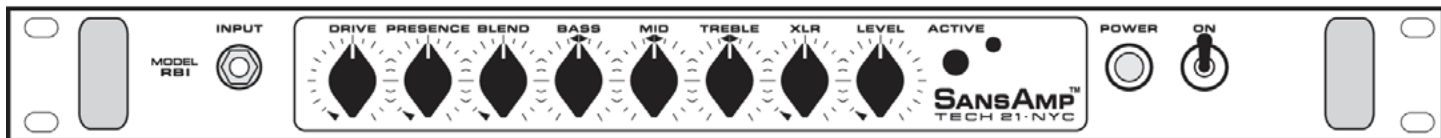
The bass guitar signal comes from a SansAmp Preamp.

Drums - we have 7pc drum microphone kit with condensers and stands if needed.

Vocalist has own microphone with 50' Pig Hog XLR cable.



SansAmp RBI Front Controls



SansAmp RBI Rear Panel

